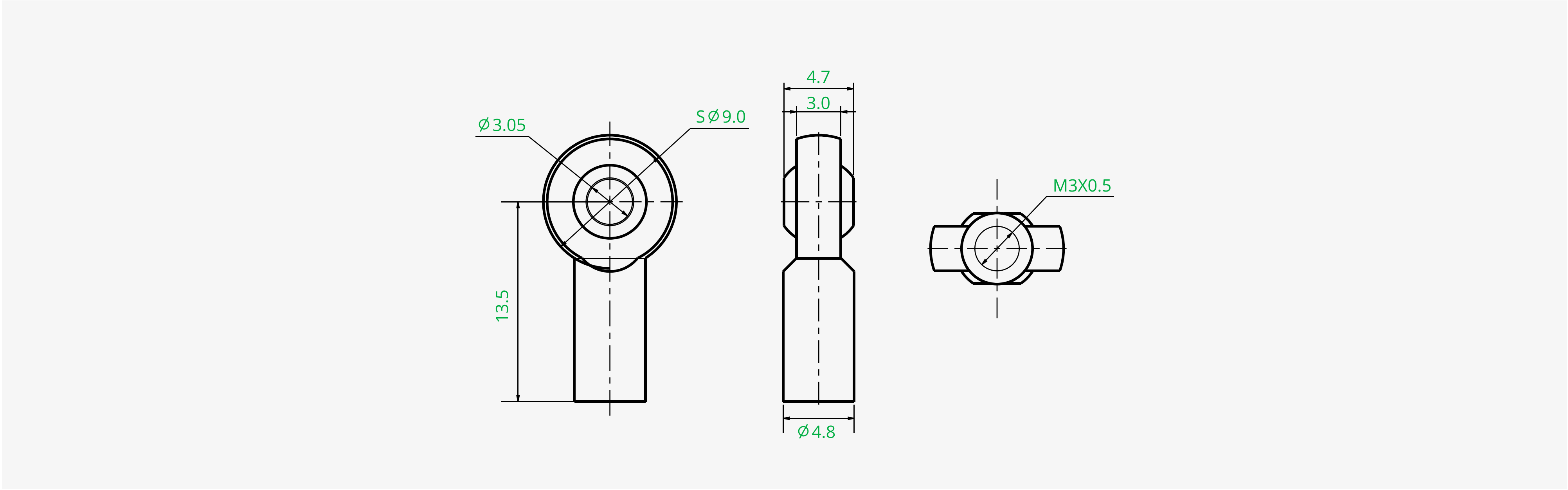


M3 Aluminum Rod End Ball Joint



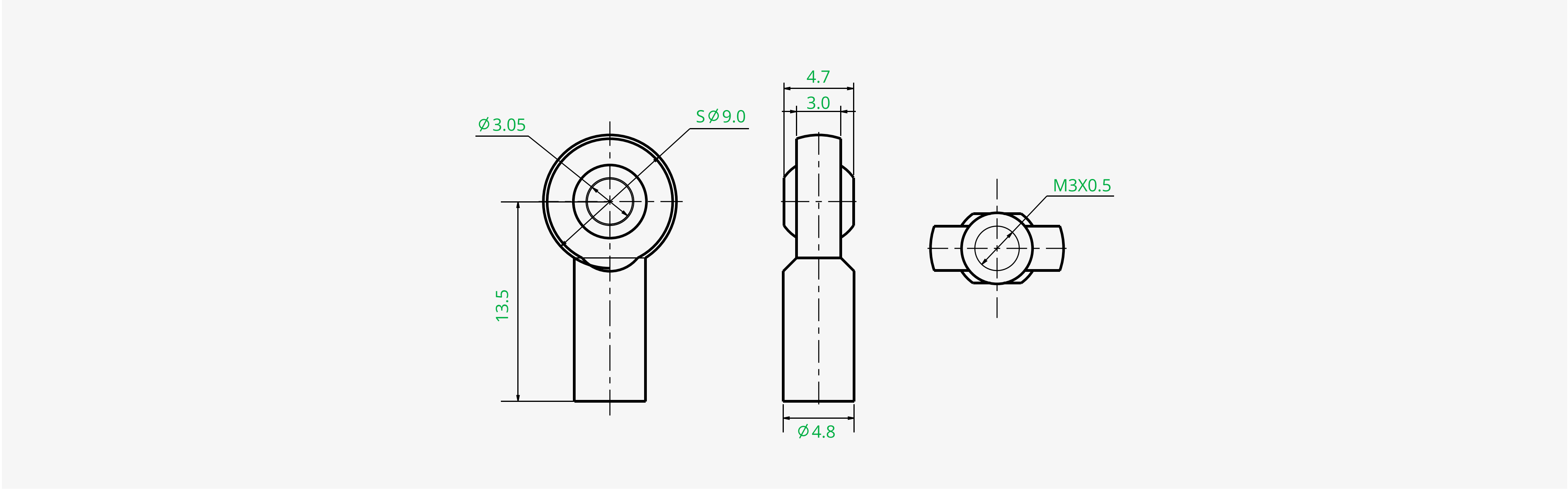
Basic Information

Articulation Angle	Approximately 20°	Thread Direction	CW Thred
Material	Aluminum Alloy (Body), Brass (Ball)	Thread Size	M3 Bottom Hole
Weight	1.5 g/pcs	Qty	12 PCS

Product Feature

- High-Quality Aluminum Alloy: Made from durable aluminum alloy, offering excellent corrosion resistance, wear protection, and a lightweight design.
- Smooth & Precise Movement: The ball joint ensures smooth articulation, making it ideal for RC car suspensions, steering systems, and other pivot-based mechanisms.
- Flexible & Practical Applications:Compatible with fully threaded rods, making assembly easy and secure. Ideal for RC car upgrades, robotics, and custom 3D-printed projects requiring reliable pivoting components.

M3铝合金球头



基本信息

最大旋转角度	约 20°	螺纹方向	右旋螺纹
材质	铝合金（主体）、黄铜（球）	螺纹尺寸	M3
重量	1.5 克/件	数量	12件

产品特点

- 高品质铝合金：采用优质铝合金材料，具备出色的抗腐蚀性和耐磨性，同时实现轻量化设计。
- 流畅且精准的运动：球头设计提供了顺畅的关节运动，适合用于遥控车的悬挂系统、转向系统以及其他关节结构。
- 简便的安装：支持与全螺纹螺杆搭配，安装简单、稳固。适用于遥控车升级、机器人组装及需要可靠关节部件的3D打印定制项目。